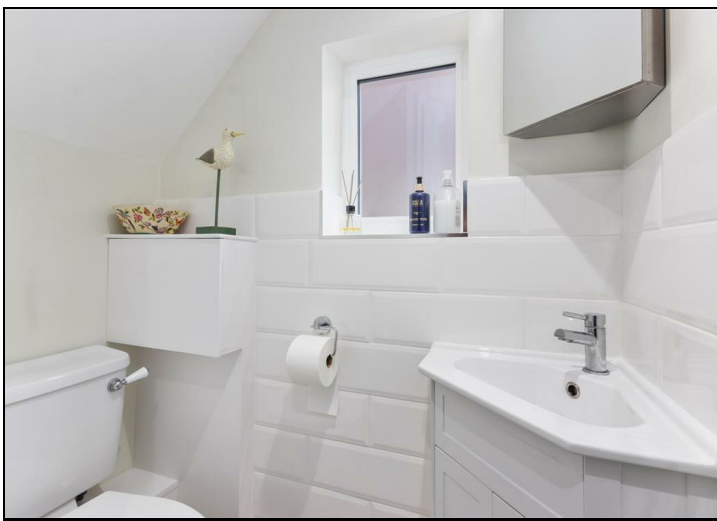


Tennyson Avenue Motspur Park, KT3 6LZ

£725,000 Freehold



This superb **THREE BEDROOM** rear extended end of terrace house has off street parking and is perfectly located for Motspur Park Station. An excellent first/second time purchase with separate front reception room, modern kitchen/dining room, downstairs w.c, three bedrooms and a modern family bathroom. Potential to extend into the loft space s.t.p.p.



Although these particulars are believed to be correct, their accuracy is not guaranteed and they do not form part of any contract.

**Celebrating 30 years
of successful Sales and
Lettings in Merton**

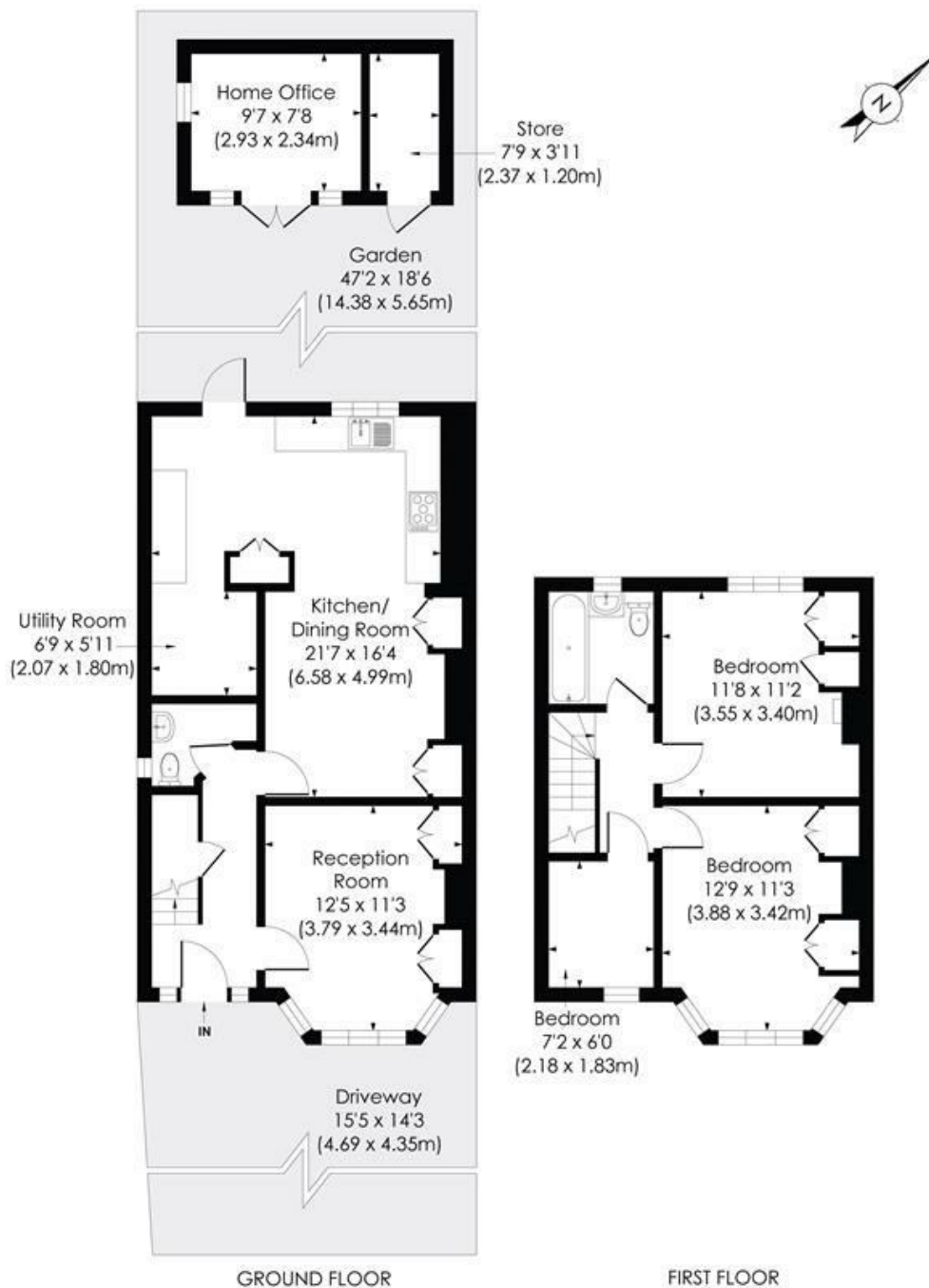


TENNYSON AVENUE, KT3

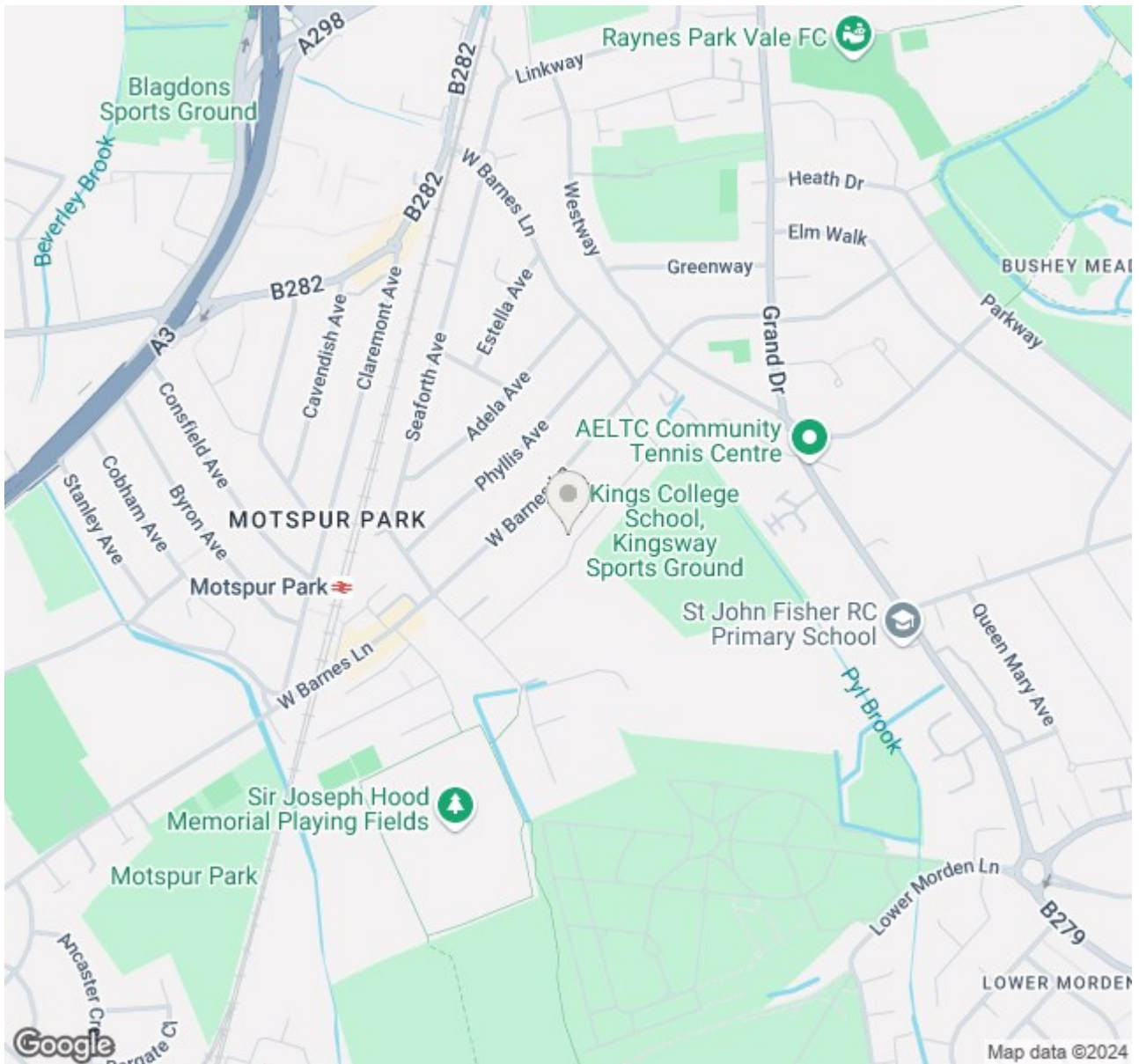
Approx. Gross Internal Floor Area

1099 Sq. ft/102.12 Sq. m (Including Outbuilding)

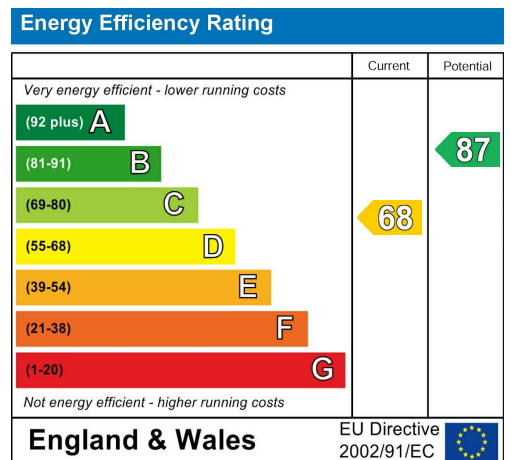
993 Sq. ft/109.20 Sq. m (Excluding Outbuilding)



© Pixangle Property Marketing Ltd. info@pixangle.com Tel: 0208 870 2118



- Three Bedrooms
- 1930's End of Terrace House
- Close to Motspur Park Station
- Off Street Parking and Side Access
- Extended Kitchen/Dining Room
- Potential to Extend S.T.P.P
- Downstairs W.C
- Home Office
- EPC - D
- Council Tax Band - E



For Free Mortgage Quote and Best Mortgage Rates, call Ellisons Mortgage Advisor on 0208 944 9595



Although these particulars are believed to be correct, their accuracy is not guaranteed and they do not form part of any contract.

Celebrating 30 years of successful Sales and Lettings in Merton

